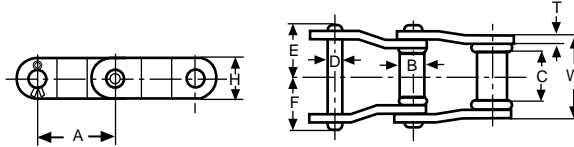


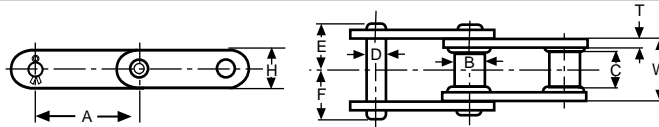
**QUICK  
REFERENCE  
GUIDE**

- Precise Automated Welding
- Specially Selected Alloy Steel
- State Of The Art Heat Treatment

HKK welded steel mill chain is manufactured to the same high quality standards as our ANSI chain. Specially selected steel, automated welding process, and computer-controlled heat-treatment provide the strength and durability for even the toughest applications. WR, WRC, and WD have heat treated pins only. WH, WHC, and WDH have all parts heat-treated.

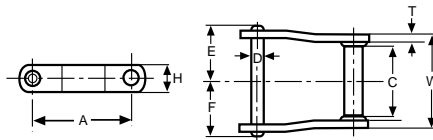


HKK Chain No.	Pitch A	Avg. Ultimate Strength	Allowable Working Load	Barrel Dia. B	Barrel Face C	Pin Dia. D	Width Rivet E	Width Cotter F	Sidebar Height H	Sidebar Thickness T	Bearing Length W	Avg. Weight per foot
WR 78	2.609	24,000	3,000	7/8	1-1/8	1/2	1-15/32	1-5/8	1-1/8	1/4	2	4.0
WH 78	"	36,000	3,500	"	"	"	"	"	"	"	"	"
WR 82	3.075	26,000	3,800	1-1/16	1-17/64	9/16	1-5/8	1-25/32	1-1/4	1/4	2-1/4	5.5
WH 82	"	40,000	4,500	"	"	"	"	"	"	"	"	"
WR 124	4.000	46,000	6,300	1-7/16	1-5/8	3/4	2-3/32	2-21/64	1-1/2	3/8	2-3/4	8.5
WH 124	"	60,000	7,350	"	"	"	"	"	"	"	"	"
WR 111	4.760	46,000	7,550	1-7/16	2-1/4	3/4	2-25/64	2-19/32	1-1/2	3/8	3-3/8	8.4
WH 111	"	60,000	8,850	"	"	"	"	"	"	"	"	"
WR 106	6.000	46,000	6,750	1-1/4	1-5/8	3/4	2-3/64	2-21/64	1-1/2	3/8	2-13/16	7.0
WH 106	"	60,000	7,850	"	"	"	"	"	"	"	"	"
WR 132	6.050	84,000	13,100	1-5/8	3	1	3-5/32	3-17/32	2	1/2	4-3/8	13.4
WH 132	"	100,000	15,000	"	"	"	"	"	"	"	"	"



Dimensions in inches & pounds

HKK Chain No.	Pitch A	Avg. Ultimate Strength	Allowable Working Load	Barrel Dia. B	Barrel Face C	Pin Dia. D	Width Rivet E	Width Cotter F	Sidebar Height H	Sidebar Thickness T	Bearing Length W	Avg. Weight per foot
WRC 188	2.609	24,000	3,000	7/8	15/16	1/2	1-15/32	1-21/32	1-1/8	1/4	1-7/8	3.7
WHC 188	"	36,000	3,500	"	"	"	"	"	"	"	"	"
WRC 78	2.609	24,000	3,000	7/8	1-1/8	1/2	1-15/32	1-5/8	1-1/8	1/4	2	4.0
WHC 78	"	36,000	3,500	"	"	"	"	"	"	"	"	"
WRC 82	3.075	26,000	3,800	1-1/16	1-17/64	9/16	1-5/8	1-25/32	1-1/4	1/4	2-1/4	5.5
WHC 82	"	40,000	4,500	"	"	"	"	"	"	"	"	"
WRC 131	3.075	46,000	5,000	1-1/8	1-1/4	5/8	1-25/32	2-3/32	1-1/2	3/8	2-3/8	6.8
WHC 131	"	60,000	5,700	"	"	"	"	"	"	"	"	"
WRC 124	4.000	46,000	6,300	1-7/16	1-5/8	3/4	2-3/32	2-21/64	1-1/2	3/8	2-3/4	8.5
WHC 124	"	60,000	7,350	"	"	"	"	"	"	"	"	"
WRC 111	4.760	46,000	7,550	1-7/16	2-1/4	3/4	2-25/64	2-19/32	1-1/2	3/8	3-3/8	8.4
WHC 111	"	60,000	8,850	"	"	"	"	"	"	"	"	"
WRC 106	6.000	46,000	6,750	1-1/4	1-5/8	3/4	2-3/32	2-21/64	1-1/2	3/8	2-3/4	7.0
WHC 106	"	60,000	7,850	"	"	"	"	"	"	"	"	"
WRC 132	6.050	84,000	13,100	1-5/8	3	1	3-5/32	3-17/32	2	1/2	4-3/8	13.4
WHC 132	"	100,000	15,000	"	"	"	"	"	"	"	"	"



Dimensions in inches & pounds

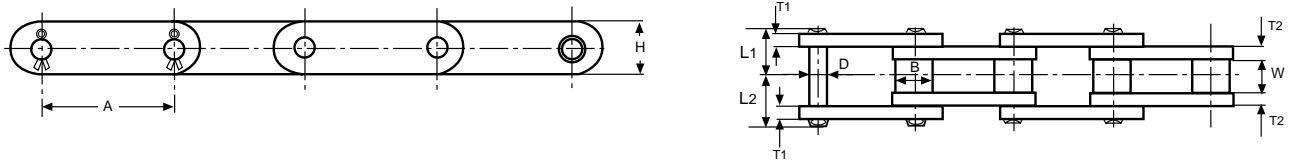
HKK Chain No.	Pitch A	Avg. Ultimate Strength	Allowable Working Load	Barrel Dia. B	Barrel Face C	Pin Dia. D	Width Rivet E	Width Cotter F	Sidebar Height H	Sidebar Thickness T	Bearing Length W	Avg. Weight per foot
WD 102	5.000	51,000	8,500	"	6-1/2	3/4	4-9/16	4-27/32	1-1/2	3/8	7-5/8	12.0
WD 104	6.000	51,000	8,500	"	4-1/8	3/4	3-1/2	3-25/32	1-1/2	3/8	5-1/2	8.6
WD 110	"	51,000	8,500	"	9	"	5-29/32	6-3/32	"	"	10-3/8	12.5
WD 120	"	80,000	12,300	"	8-3/4	7/8	6-1/8	6-9/16	2	1/2	10-1/2	22.0
WD 112	8.000	51,000	8,500	"	9	3/4	5-29/32	6-3/32	1-1/2	3/8	10-3/8	11.2
WD 116	"	"	"	"	13	"	7-43/64	7-61/64	1-3/4	"	14-1/8	16.0
WD 118	"	80,000	12,300	"	13-1/4	7/8	8-3/8	8-13/16	2	1/2	14-7/8	26.0
WD 122	"	"	"	"	8-3/4	"	6-1/8	6-9/16	"	"	10-1/2	17.5
WD 480	"	"	"	"	11-1/32	"	7-17/64	7-45/64	"	"	12-13/16	19.8

Dimensions in inches & pounds

**QUICK  
REFERENCE  
GUIDE**

- Solid Roller ➤ Solid Bushing ➤ Shot-Peened Surfaces ➤ Specially Selected Alloy Steel ➤ State Of The Art Heat Treatment Process

HKK provides three types of 81X series engineering class conveyor chains: 81X, 81XH Heavy, and 81XH-S Heavy Special. Each type is designed with different link plate thickness and height to achieve progressively higher allowable loads and durability. HKK's 81X series chains are all equipped with cold-forged, shot peened, solid rollers and solid bushings. This, accompanied with specially selected alloy steels and a computer monitored heat treatment process, ensures long life under the harshest conditions.



HKK Chain 81X No.	Pitch A	Roller		Pin Dia. D	Plate			Overall Width		Max. Allowable Load (lbs)	Avg. Ultimate Strength (lbs)	Avg. Weight Per Foot (lbs.)
		Dia. B	Width W		Height H	Thickness	T1	T2	L1			
HKK81X	2.609	0.906	1.062	0.437	1.125	0.156	0.156	0.945	1.118	2,700	25,000	2.6
HKK81XH	2.609	0.906	1.062	0.437	1.264	0.218	0.312	1.188	1.343	6,830	42,000	3.9
HKK81XH-S	2.609	0.906	1.062	0.437	1.264	0.312	0.312	1.260	1.430	6,830	42,000	4.6

Warning: Welding on any heat-treated chain will distort the heat treatment and severely deteriorate chain quality.

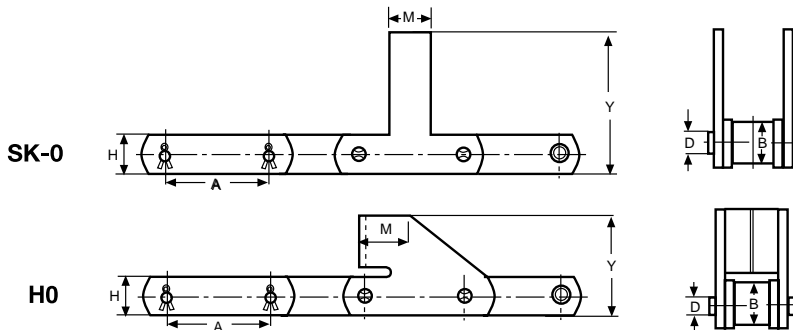
Dimensions in inches & pounds

# 81X Attachments

**QUICK  
REFERENCE  
GUIDE**

- Solid Roller ➤ Solid Bushing ➤ Custom Spacing
- State Of The Art Heat Treatment Process

HKK 81X attachments are manufactured using specially selected alloy steel, and a state of the art heat treatment process. Roller link attachments have cold-forged solid bushings and solid rollers. Custom spacing of attachments are readily available.



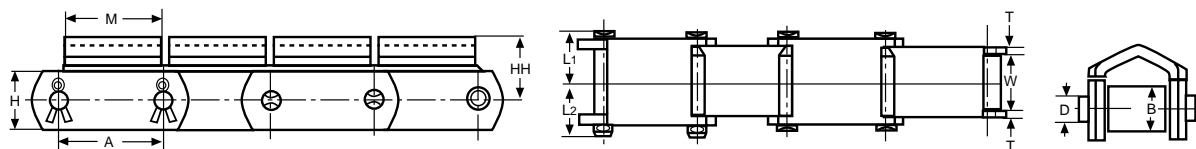
HKK 81X Att.	Pitch A	Roller Dia. B	Pin Dia. D	Plate Height H	Attachment		Max Allowable Load (lbs)	Avg. Ultimate Strength (lbs)	Avg. Weight per Att.
					Height Y	Width M			
H-0	2.609	0.906	0.437	1.125	3.125	1.173	2,700	25,000	1.0
MM-0	2.609	0.906	0.437	1.125	6.250	1.500	2,700	25,000	1.3

Dimensions in inches & pounds

**QUICK  
REFERENCE  
GUIDE**

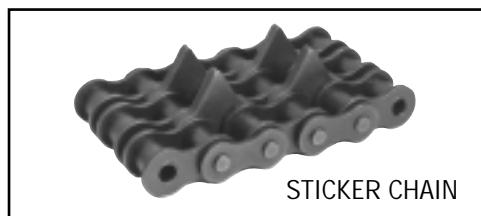
- Solid Bushing ➤ Solid Roller ➤ Side Split Roof Top ➤ No Ridges
- Smooth Top

HKK 81X Roof-Top chain has a unique side split feature. This smooth style roof-top will help protect transferring lumber from scratches and dents while reducing build up of unwanted dust in the chain mechanism. Cold forged solid rollers and solid bushings greatly extend chain life. Specially selected alloy steel and a computer monitored heat treatment process ensure high strength and durability.



HKK 81X Roof-Top Chain	Pitch	Roller		Pin Dia.	Plate		Roof Width	Overall Dimension		Roof Height	Max. Allowable Load (lbs)	Avg. Ultimate Strength (lbs)	Avg. Weight Per Foot (lbs)
		Dia.	Width		Height	Thickness		L1	L2				
	A	B	W	D	H	T	M						
	2.609	0.906	1.063	0.438	1.125	0.156	2.500	0.938	1.125	1.250	2,700	25,000	3.7

Dimensions in inches & pounds

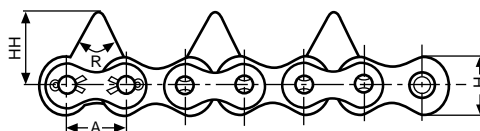
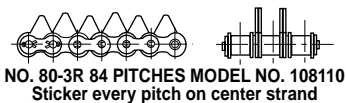
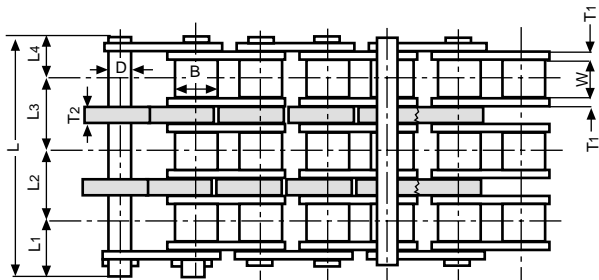


# Sticker Chain

**QUICK  
REFERENCE  
GUIDE**

- Solid Bushing ➤ Solid Roller ➤ Solid Sticker Available
- Faster Processing

HKK Sticker chains have a solid foundation in the lumber industry. Cold forged solid rollers, solid bushings, proven sticker points, and through hardened pins provide high durability and productivity with minimum stretch even at the highest RPMs.



HKK STICKER CHAIN	HKK No.	Pitch	Roller		Pin Dia.	Plate		Overall Dimension					Sticker Height	Sticker Thickness	Sticker Angle	Avg. Ultimate Strength (lbs)	Avg. Weight Per Foot
			Dia.	Width		Height	Thickness	L	L1	L2	L3	L4					
			A	B	W	D	H	T1						HH	T2	R	
80-3R	108110	1.000	.625	.625	.312	.914	.125	3.678	.745	1.153	1.153	0.627	1.25	.125	60	53,000	5.54
80-3R	108139	1.000	.625	.625	.312	.914	.125	3.678	.745	1.153	1.153	0.627	1.25	.250	60	53,100	5.54
100-3C	110131	1.250	.750	.750	.375	1.154	.156	4.503	.913	1.409	1.409	0.772	1.535	.312	80	78,600	8.05

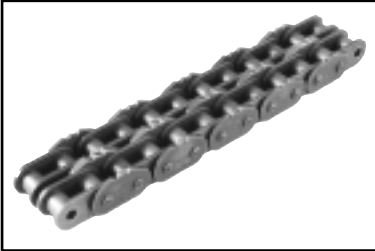
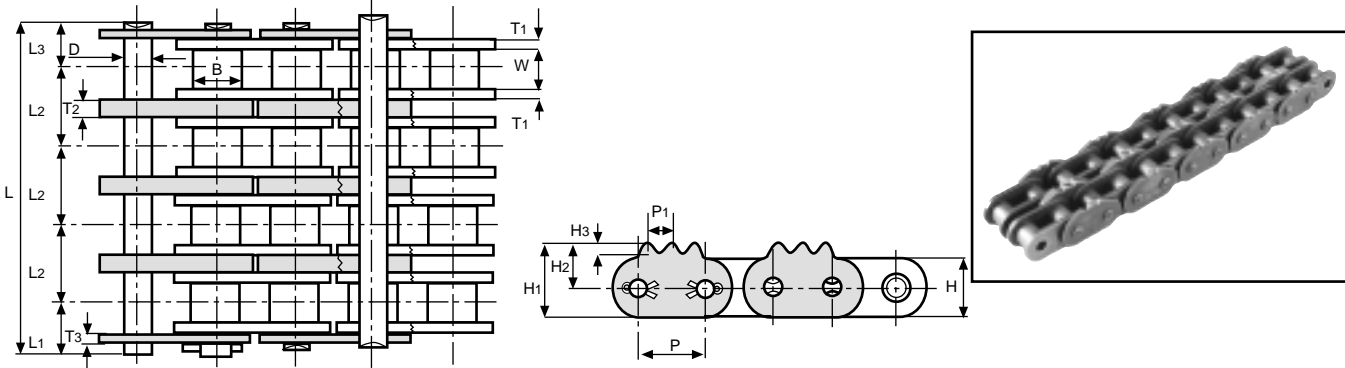
Dimensions in inches & pounds

# Edger Chain

**QUICK  
REFERENCE  
GUIDE**

- Solid Roller ➤ Solid Bushing ➤ Through Hardened Pins
- Less Wood Damage ➤ Faster Processing

HKK Edger chain is well suited for today's high output lumber industry. Our cold-forged solid rollers, solid bushing, and solid center plates, along with through-hardened pins make HKK chain extremely durable even at high rpms. Shot-peened side plates made from specially selected alloy steel have a proven point tooth design for higher grip with less down force.



HKK Edger Chain	HKK Part No.	Pitch		Roller		Pin Dia.	Plate						Overall Dimension				Avg. Ultimate Strength	Avg. Weight Per Foot	
		P	P1	Dia.	Width		Height				Thickness			L	L1	L2			L3
						B	W	H	H1	H2	H3	T1	T2				T3		
80*	108203	1.000	.375	.625	.625	.312	.914	1.143	.686	.125	.125	-	.125	1.388	.760	-	.628	17,700	2.1
80-2	108246	1.000	.375	.625	.625	.312	.914	1.143	.686	.125	.125	.250	.125	2.545	.760	1.153	.632	35,400	4.0
80-3	108160	1.000	.375	.625	.625	.312	.914	1.143	.686	.125	.125	.250	.125	3.694	.760	1.153	.628	53,100	6.0
80-4	108205	1.000	.375	.625	.625	.312	.914	1.143	.686	.125	.125	.250	.125	4.847	.760	1.153	.628	70,800	8.0
100-2	110165	1.250	.375	.750	.750	.375	1.142	1.325	.754	.125	.156	.312	.156	3.095	.914	1.409	.772	52,400	6.0

Note: Other profile of edger is also available upon request.

Dimensions in inches & pounds

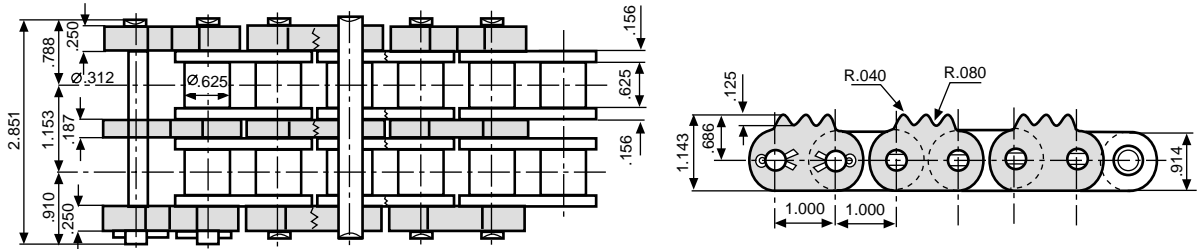
\* Case Hardened Pins

# Heavy Edger Chain

**QUICK  
REFERENCE  
GUIDE**

- Solid Roller ➤ Solid Bushing ➤ Runs On Standard Sprockets
- Through Hardened Pins ➤ Less Wood Damage ➤ Faster Processing

HKK 80-2 Heavy Edger chain is manufactured to handle higher capacity and shock loads than standard chains. Cold forged solid bushings, solid rollers and thicker outside plates provide longer life with less chain elongation. Shot-peened side plates made from specially selected alloy steel have a proven point tooth design for higher grip with less down force. HKK 80-2 Heavy edger chain runs on standard 80-2 sprockets to provide easy installation.



HKK Edger Chain	HKK Part No.	Pitch		Roller		Pin Dia.	Plate						Overall Dimension				Avg. Ultimate Strength	Avg. Weight Per Foot	
		P	P1	Dia.	Width		Height				Thickness			L	L1	L2			L3
						B	W	H	H1	H2	H3	T1	T2				T3		
80-2H	108518A	1.000	.375	.625	.625	.312	.914	1.143	.686	.125	.156	.187	.250	2.851	.910	1.153	.788	40,400	5.0

Dimensions in inches & pounds