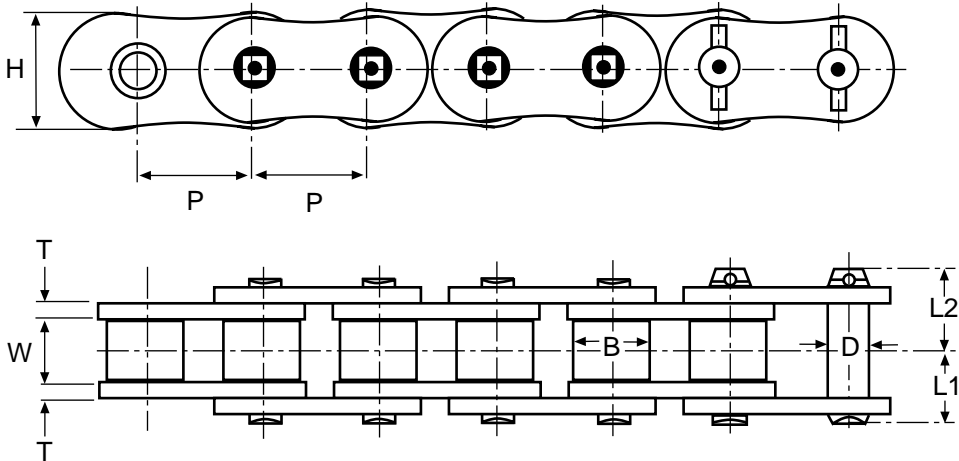


**QUICK
REFERENCE
GUIDE**

- Solid Bushings ➤ Solid Rollers ➤ Specially Selected Alloy Steel Pins
- Four Point Rivets ➤ Offset Links Not Available

HKK Super & Super Heavy series chains are designed to provide longer chain life under severe loads. Enhanced plate configuration and ball milling plate holes ensure greater tensile strength and resistance to fatigue failure. High-grade alloy steel and four point riveting provide higher shock load capacities. Super Heavy series chains have side plate thickness of the next larger chain size. Both Super and Super Heavy run on standard sprockets.



HKK Super Chain No.	Pitch A	Roller		Pin	Plate		Overall Width		Maximum Allowable Load (lbs)	Average Ultimate Strength (lbs)	Average Weight Per Foot (lbs)	
		Dia. B	Width W	Dia. D	Height H	Thickness T	L1	L2			Riveted	Cottered
HKK SUPER CHAIN												
HKK 80 Super	1	0.625	5/8	0.312	0.949	0.125	0.640	0.760	4,180	18,900	1.89	1.92
HKK 100 Super	1-1/4	0.750	3/4	0.375	1.185	0.156	0.792	0.902	6,830	28,600	2.87	2.93
HKK 120 Super	1-1/2	0.875	1	0.437	1.425	0.187	0.993	1.138	8,810	41,800	4.24	4.32
HKK 140 Super	1-3/4	1.000	1	0.500	1.661	0.219	1.075	1.249	12,100	55,100	5.41	5.52
HKK 160 Super	2	1.125	1-1/4	0.562	1.898	0.250	1.278	1.453	15,800	70,500	7.26	8.43
HKK 200 Super	2-1/2	1.562	1-1/2	0.781	2.374	0.312	1.562	1.764	21,100	110,200	11.83	12.07
HKK 240 Super	3	1.875	1-7/8	0.936	2.850	0.375	1.898	2.186	29,700	163,100	17.21	17.55
HKK SUPER HEAVY CHAIN												
HKK 80 Super H	1	0.625	5/8	0.312	0.949	0.156	0.699	0.831	4,630	22,000	2.22	2.22
HKK 100 Super H	1-1/4	0.750	3/4	0.375	1.185	0.187	0.857	0.985	7,280	32,600	3.28	3.28
HKK 120 Super H	1-1/2	0.875	1	0.437	1.425	0.219	1.058	1.221	9,480	44,000	4.67	4.67
HKK 140 Super H	1-3/4	1.000	1	0.500	1.661	0.250	1.140	1.312	12,800	57,300	5.97	5.97
HKK 160 Super H	2	1.125	1-1/4	0.562	1.898	0.281	1.347	1.540	16,500	72,700	7.87	7.87